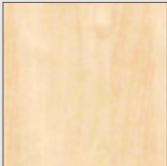
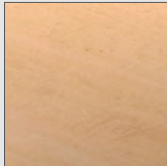
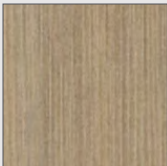
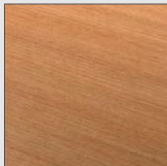
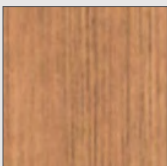
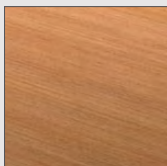
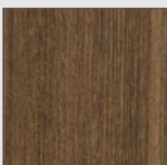
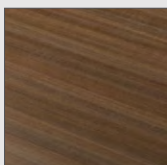
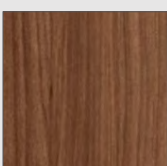
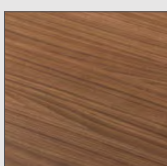


THERMOLAMINATE TO HIGH PRESSURE LAMINATE CONVERSION

DISCONTINUED THERMOLAMINATE (TLAM)

HIGH PRESSURE LAMINATE (HPL) SUGGESTED ALTERNATIVE

1	 <p>NATIVE MAPLE</p>	 <p>WILSONART LIMBER MAPLE</p>
2	 <p>IBIS</p>	 <p>FORMICA WEATHERED ASH</p>
3	 <p>FENELON</p>	 <p>FORMICA PECAN WOODLINE</p>
4	 <p>BELAMBRA</p>	 <p>WILSONART STUDIO TEAK</p>
5	 <p>SIENNA</p>	 <p>WILSONART WALNUT HEIGHTS</p>

LEGRAND | AV COMMERCIAL BRANDS

C2G | Chief | Da-Lite | Luxul | Middle Atlantic | Vaddio | Wiremold

WHAT GREAT SYSTEMS ARE BUILT ON™ | legrandav.com

USA 800.266.7225 av.middleatlantic.support@legrand.com CANADA 888.766.9770 av.middleatlantic.support@legrand.com

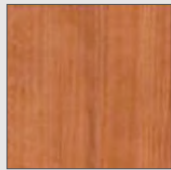
©2021 Legrand AV Inc. 210383 Rev A 7/21 Middle Atlantic is a registered trademark of Legrand AV Inc. All other brand names or marks are used for identification purposes and are trademarks of their respective owners. All patents are protected under existing designations. Other patents pending.

THERMOLAMINATE TO HIGH PRESSURE LAMINATE CONVERSION

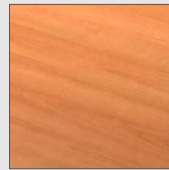
DISCONTINUED THERMOLAMINATE (TLAM)

HIGH PRESSURE LAMINATE (HPL) SUGGESTED ALTERNATIVE

6

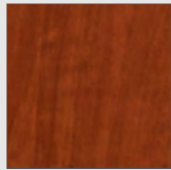


HAZELNUT MAPLE

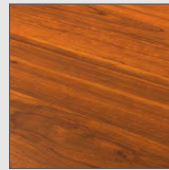


WILSONART FONTHILL PEAR

7

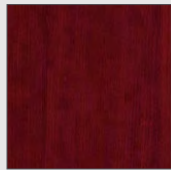


AUBURN STREAM

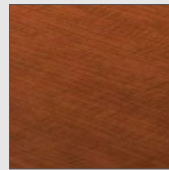


FORMICA GLAMOUR CHERRY

8

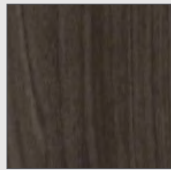


NAPA

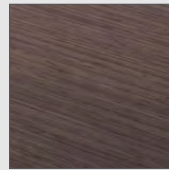


WILSONART VERSAILLES ANIGRE

9

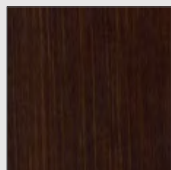


TIMBERWOLF

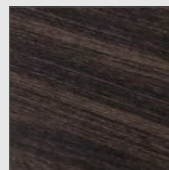


WILSONART ASIAN NIGHT

10



CAFÉ NOIR



FORMICA BLACKENED LEGNO

LEGRAND | AV COMMERCIAL BRANDS

C2G | Chief | Da-Lite | Luxul | Middle Atlantic | Vaddio | Wiremold

WHAT GREAT SYSTEMS ARE BUILT ON™ | legrandav.com

USA 800.266.7225 av.middleatlantic.support@legrand.com CANADA 888.766.9770 av.middleatlantic.support@legrand.com

©2021 Legrand AV Inc. 210383 Rev A 7/21 Middle Atlantic is a registered trademark of Legrand AV Inc. All other brand names or marks are used for identification purposes and are trademarks of their respective owners. All patents are protected under existing designations. Other patents pending.

THERMOLAMINATE TO HIGH PRESSURE LAMINATE CONVERSION

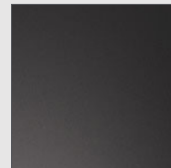
DISCONTINUED THERMOLAMINATE (TLAM)

HIGH PRESSURE LAMINATE (HPL) SUGGESTED ALTERNATIVE

11

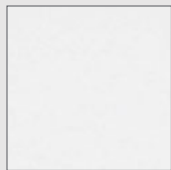


NIGHTTIDE

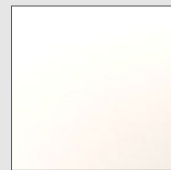


WILSONART BLACK

12

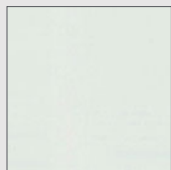


FROST

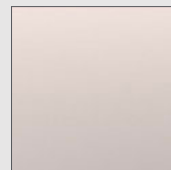


FORMICA BRITE WHITE

13



GRAY ASH

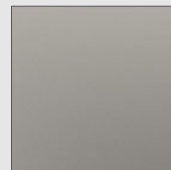


WILSONART GREY

14

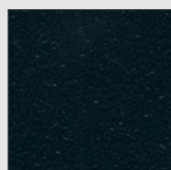


SHARK GRAY

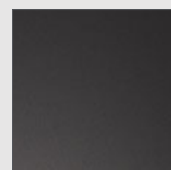


FORMICA CITADEL

15



SLATE



WILSONART BLACK

LEGRAND | AV COMMERCIAL BRANDS

C2G | Chief | Da-Lite | Luxul | Middle Atlantic | Vaddio | Wiremold

WHAT GREAT SYSTEMS ARE BUILT ON™ | legrandav.com

USA 800.266.7225 av.middleatlantic.support@legrand.com CANADA 888.766.9770 av.middleatlantic.support@legrand.com

©2021 Legrand AV Inc. 210383 Rev A 7/21 Middle Atlantic is a registered trademark of Legrand AV Inc. All other brand names or marks are used for identification purposes and are trademarks of their respective owners. All patents are protected under existing designations. Other patents pending.

THERMOLAMINATE TO HIGH PRESSURE LAMINATE CONVERSION

DISCONTINUED THERMOLAMINATE (TLAM)

HIGH PRESSURE LAMINATE (HPL) SUGGESTED ALTERNATIVE

16

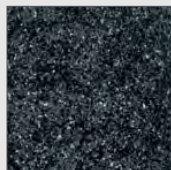


GRAYSTONE

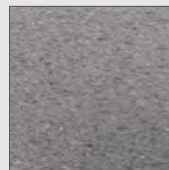


N/A

17



DARKSTONE



FORMICA SMOKE QUARSTONE

LEGRAND | AV COMMERCIAL BRANDS

C2G | Chief | Da-Lite | Luxul | Middle Atlantic | Vaddio | Wiremold

WHAT GREAT SYSTEMS ARE BUILT ON™ | legrandav.com

USA 800.266.7225 av.middleatlantic.support@legrand.com CANADA 888.766.9770 av.middleatlantic.support@legrand.com

©2021 Legrand AV Inc. 210383 Rev A 7/21 Middle Atlantic is a registered trademark of Legrand AV Inc. All other brand names or marks are used for identification purposes and are trademarks of their respective owners. All patents are protected under existing designations. Other patents pending.